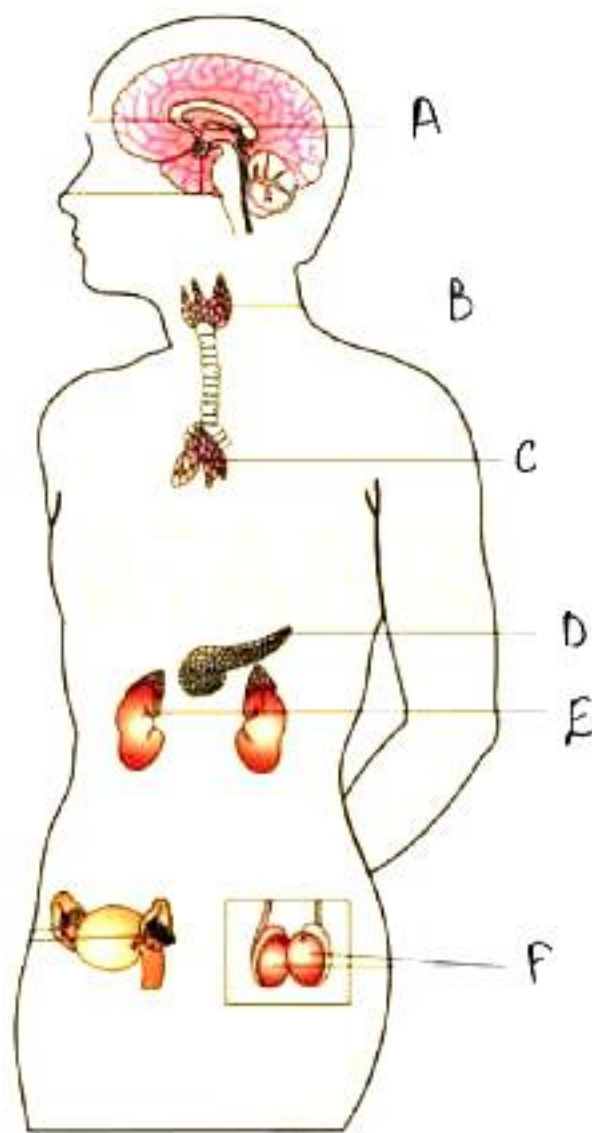


Chemical Coordination and Integration

Set – 1

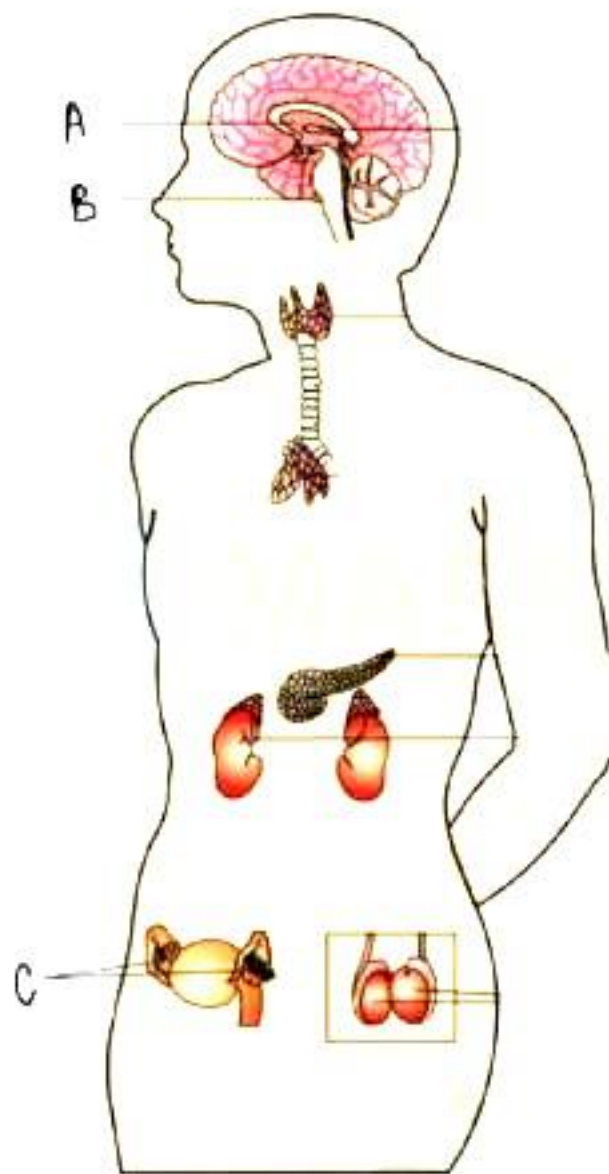
Q1. Select A, B, C and D, E and F respectively



- A. Pineal, Thyroid and Parathyroid, Thymus, Pancreas, Adrenal, Testis
- B. Pituitary, Thyroid and Parathyroid, Thymus, Pancreas, Adrenal, Testis
- C. Hypothalamus, Thyroid and Parathyroid, Thymus, Pancreas, Adrenal, Testis
- D. Hypothalamus, Thyroid and Parathyroid, Thymus, Pancreas, Adrenal, Ovaries

Ans. (A)

Q2. Select A, B, C respectively.



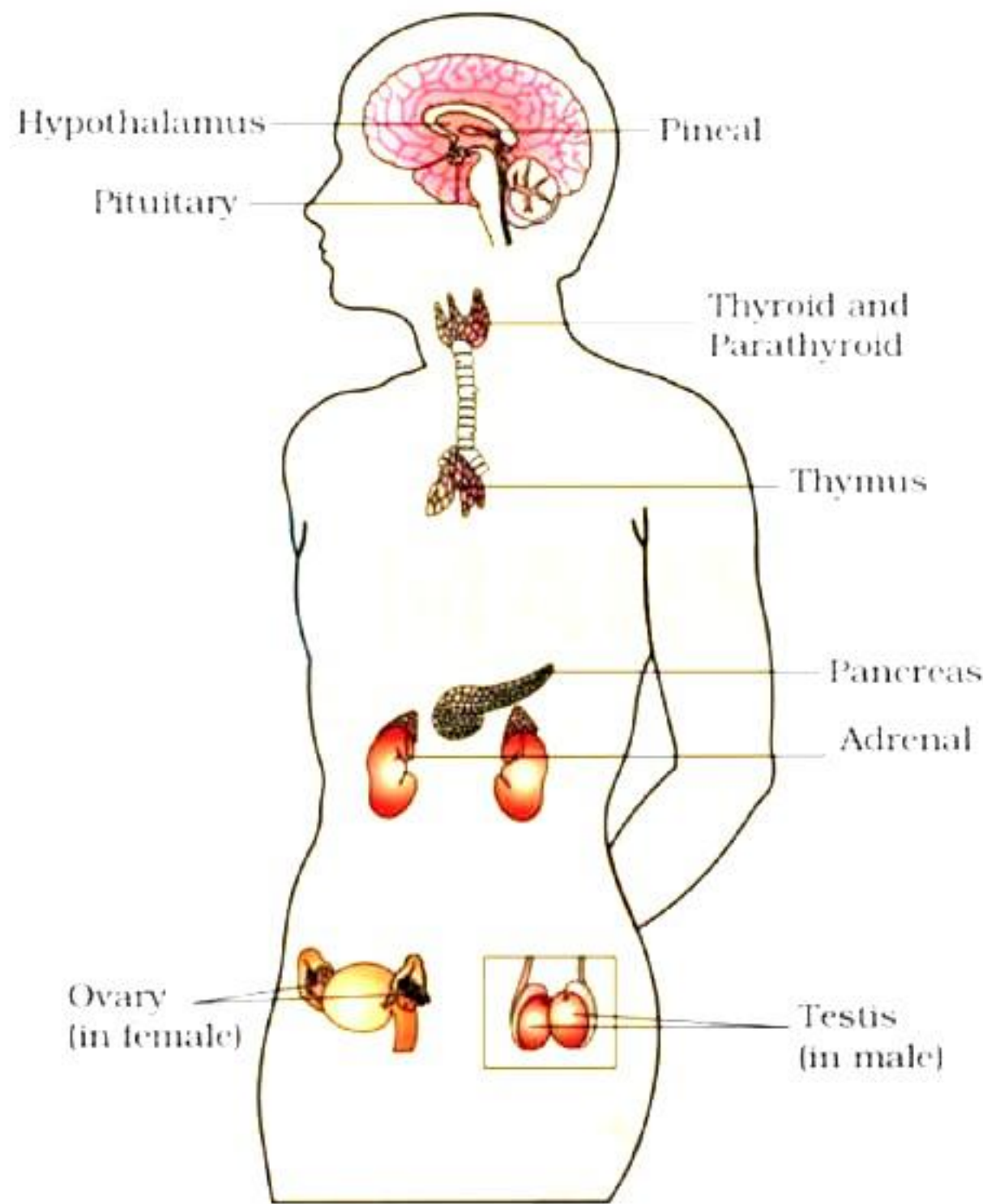
- A. Pineal gland, Hypothalamus, Ovary
- B. Hypothalamus, Pineal, Ovary



- C. Hypothalamus, Pituitary, Ovary
- D. None of the above

Ans. (C)

Q3. The following figure depicts which body system?

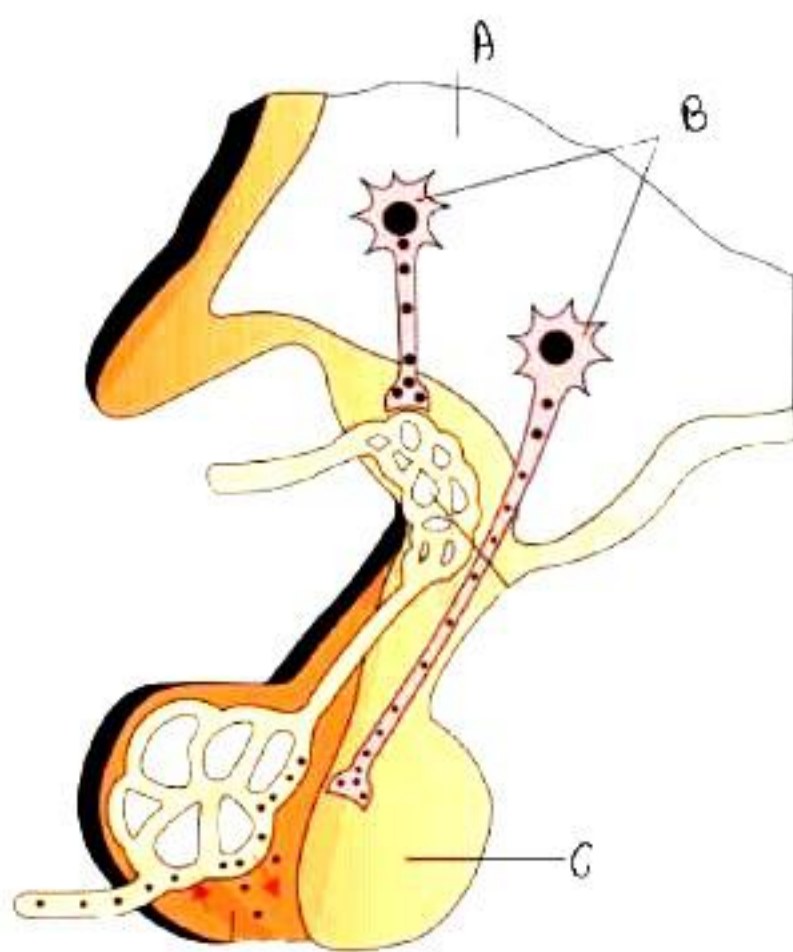


- A. Endocrine System
- B. Hormone System
- C. Neuroendocrine System
- D. None of the above

Ans. (A)

Set – 2

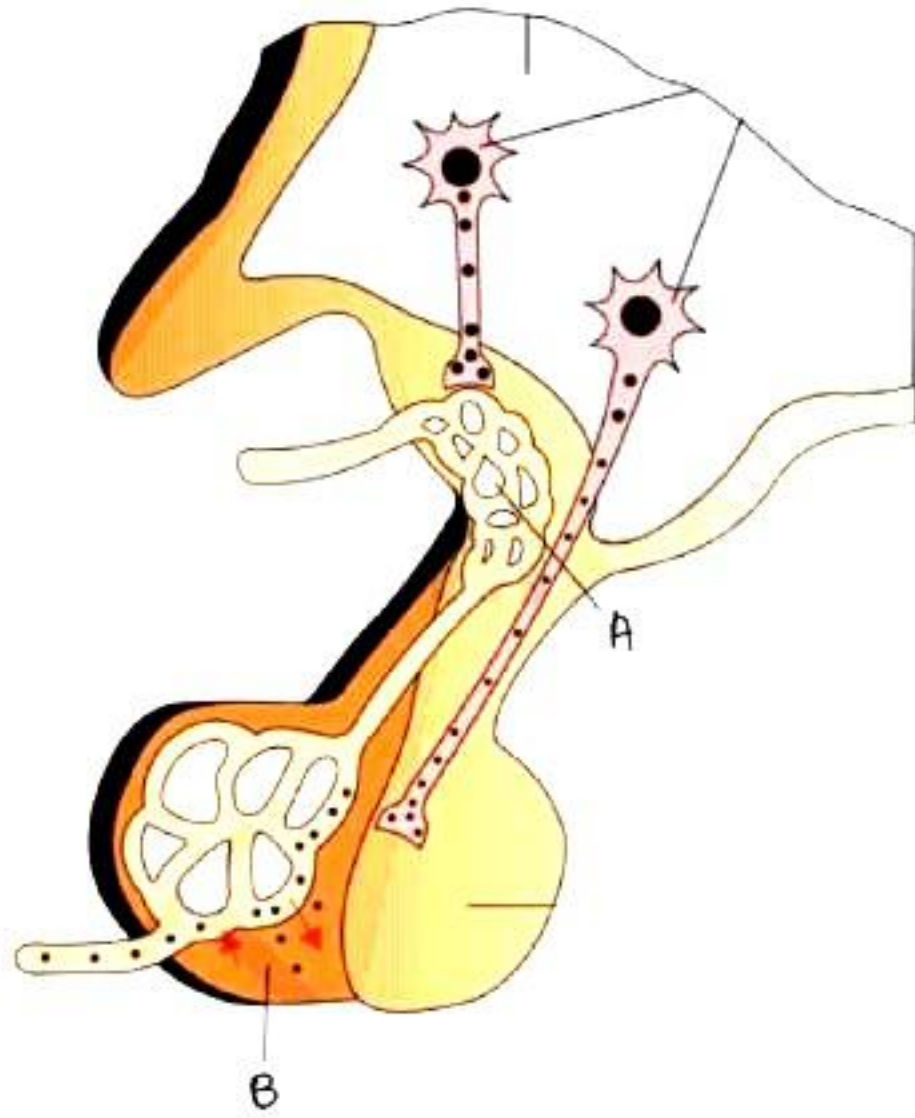
Q1. Select A, B, C respectively



- A. Hypothalamus, Hypothalamic neurons, Anterior pituitary
- B. Pituitary gland, Pituitary neurons, Pineal Gland
- C. Hypothalamus, Hypothalamic neurons, Posterior pituitary
- D. Hypothalamus, Pituitary neurons, Posterior pituitary

Ans. (C)

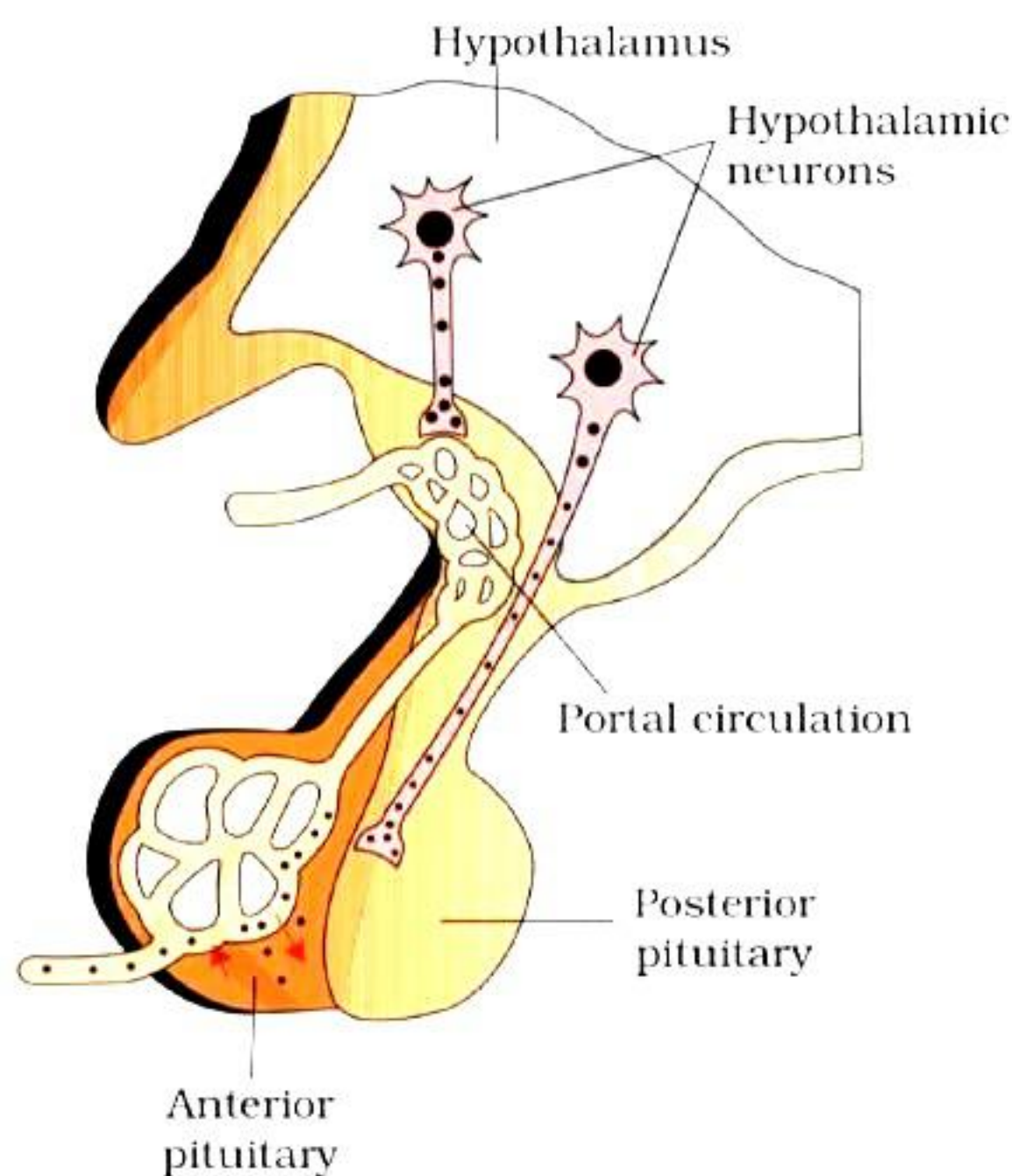
Q2. Select A, B respectively



- A. Hypothalamus and Posterior pituitary
- B. Portal circulation and Anterior pituitary
- C. Portal circulation and Posterior pituitary
- D. Hypothalamus and Anterior pituitary

Ans. (B)

Q3. Select the correct statement with respect to the following figure.

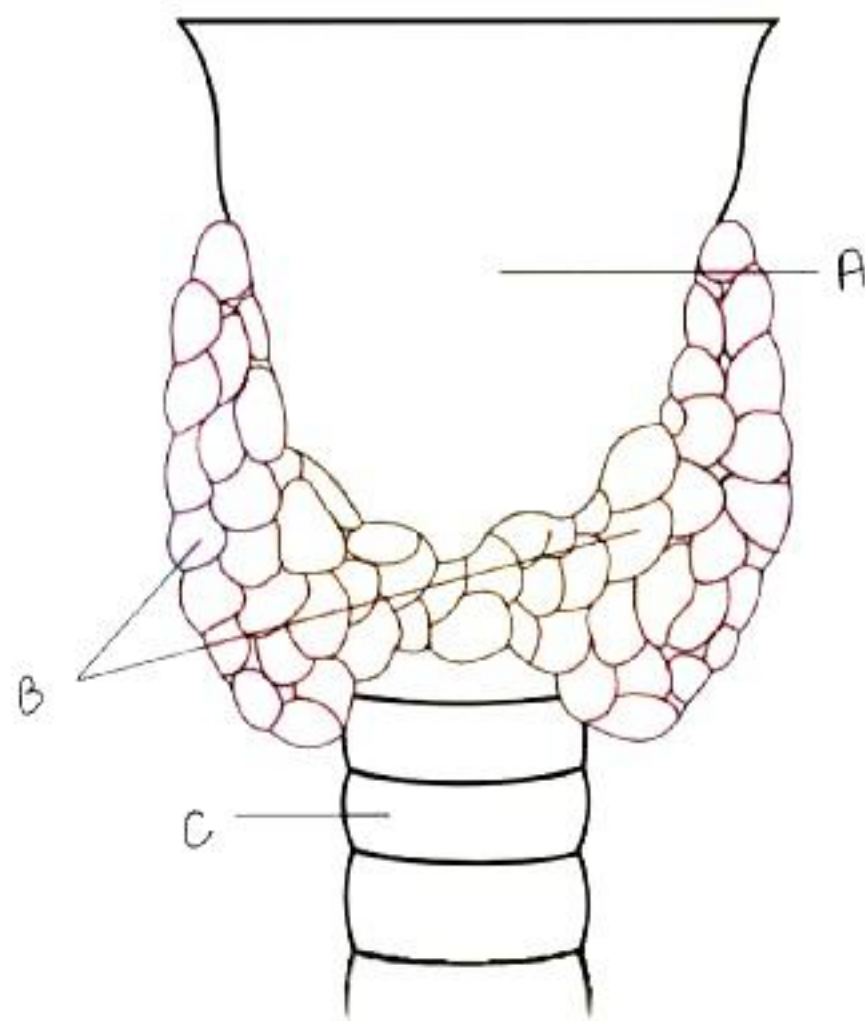


- A. The hypothalamus is located in a bony cavity called sella tursica.
- B. Pituitary is divided anatomically into an adenohypophysis and a neurohypophysis.
- C. Pars intermedia is almost merged with pars distalis.
- D. Posterior pituitary, stores and releases two hormones called oxytocin and vasopressin.

Ans. (A)

Set – 3

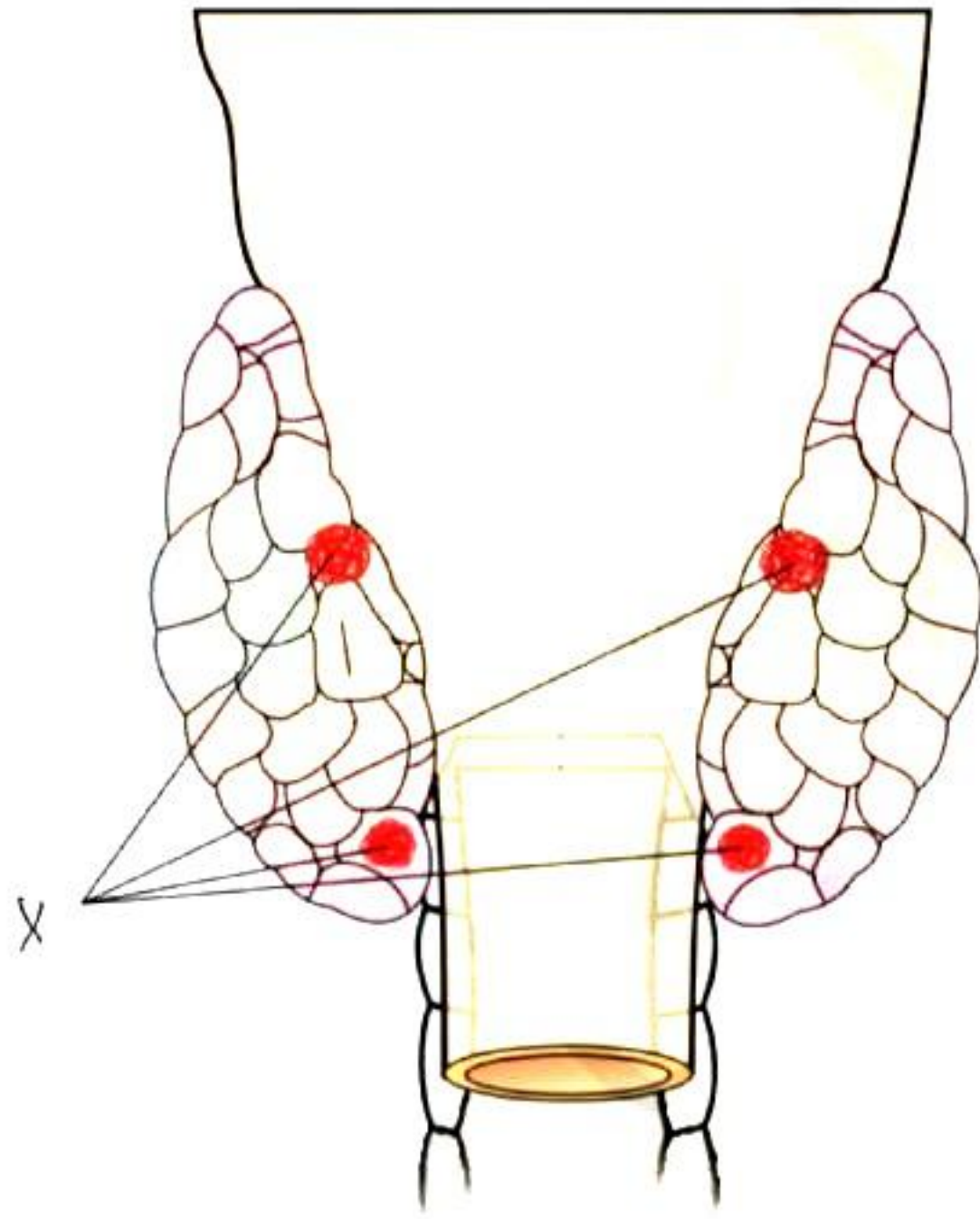
Q1. Select A, B, C respectively



- A. Larynx, Thyroid, Trachea
- B. Vocal cord, Thyroid, Trachea
- C. Larynx, Thyroid, Bronchi
- D. Vocal cord, Parathyroid gland, Trachea

Ans. (B)

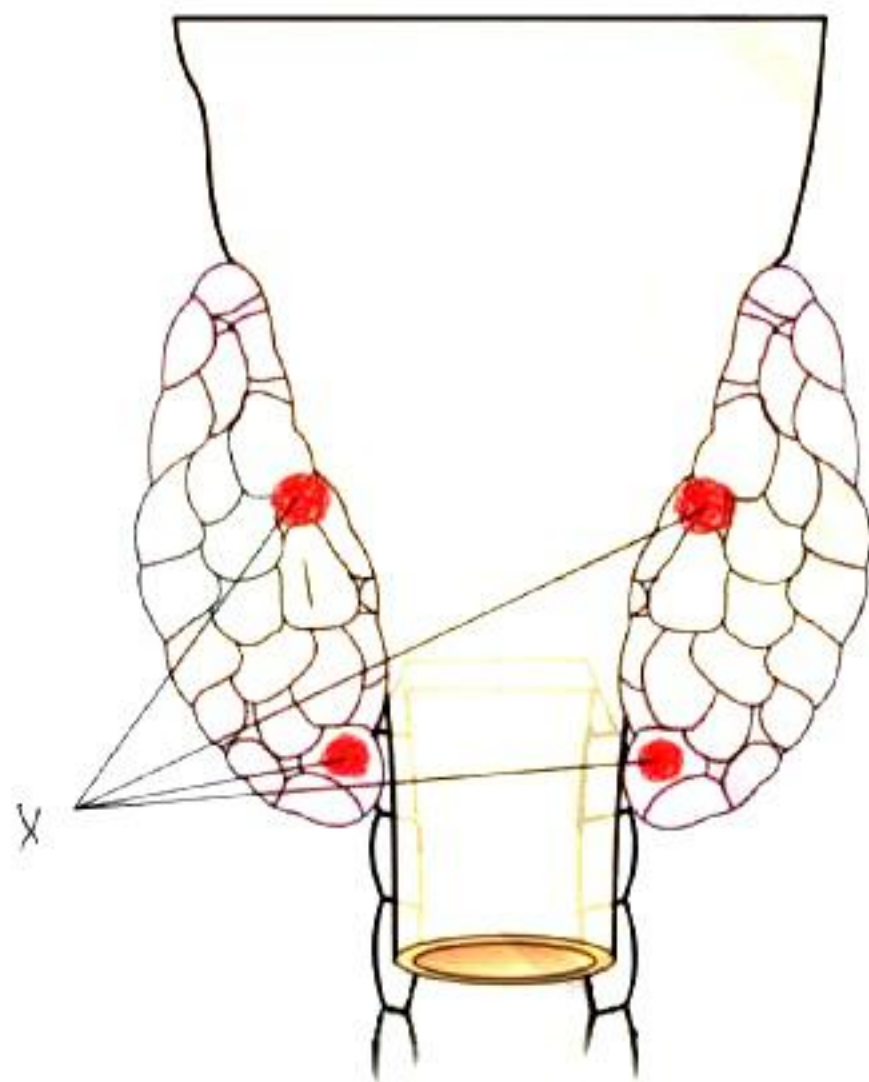
Q2. What does X represent in the given figure?



- A. Thyroid Gland
- B. Para thyroid Gland
- C. Hypothyroid Gland
- D. None of the above

Ans. (B)

Q3. Select the correct function with respect to the organ X in following figure.



- A. X increases blood calcium level.
- B. It is present on back on thyroid gland.
- C. They secrete peptide hormone called parathyroid hormone.
- D. All the above functions are correct

Ans. (D)

Set – 4

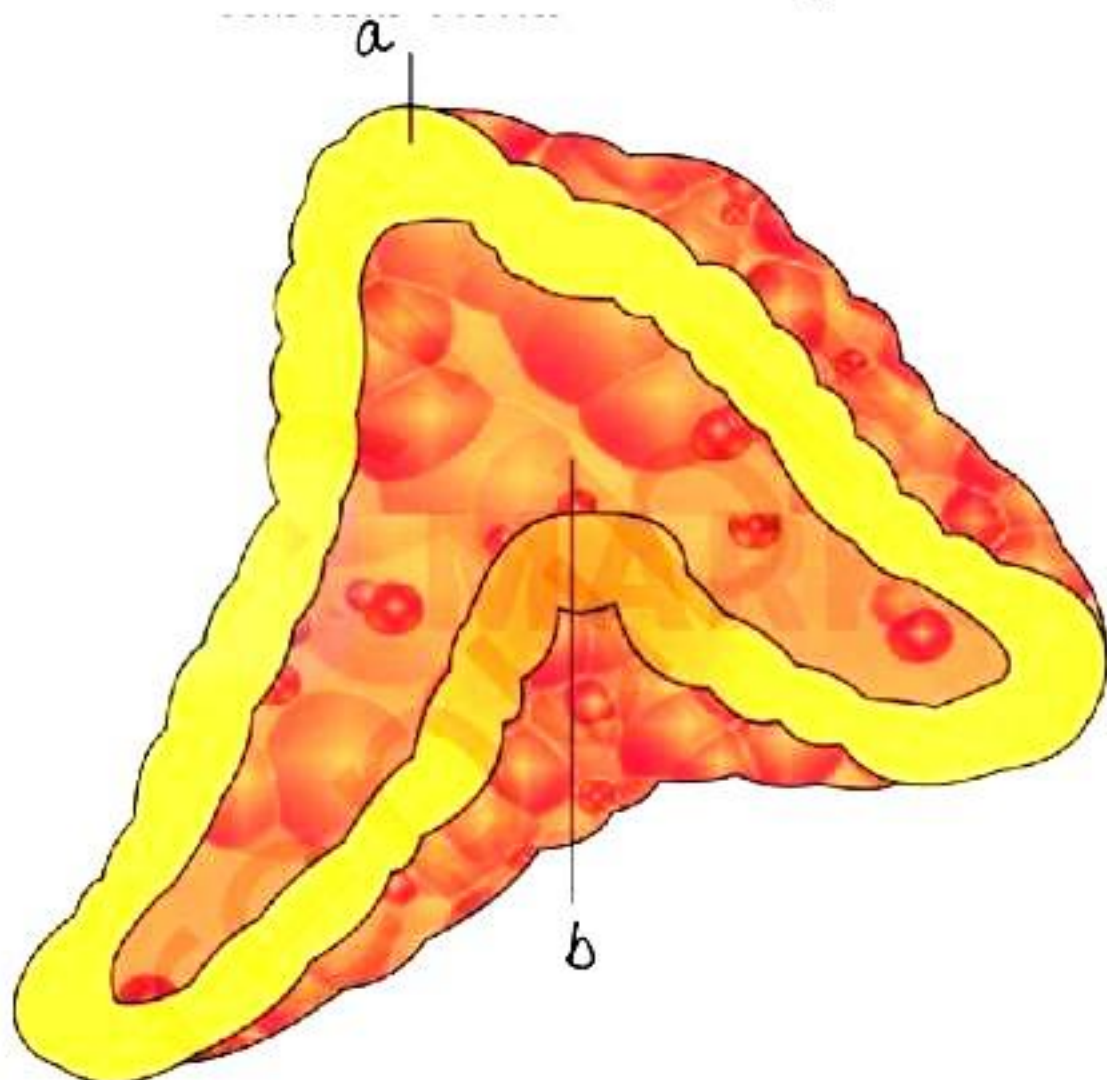
Q1. In the given figure, which part is represented by A?



- A. Adrenal Cortex
- B. Adrenal Medulla
- C. Adrenal Gland
- D. Thymus

Ans. (C)

Q2 .Select a and b respectively.

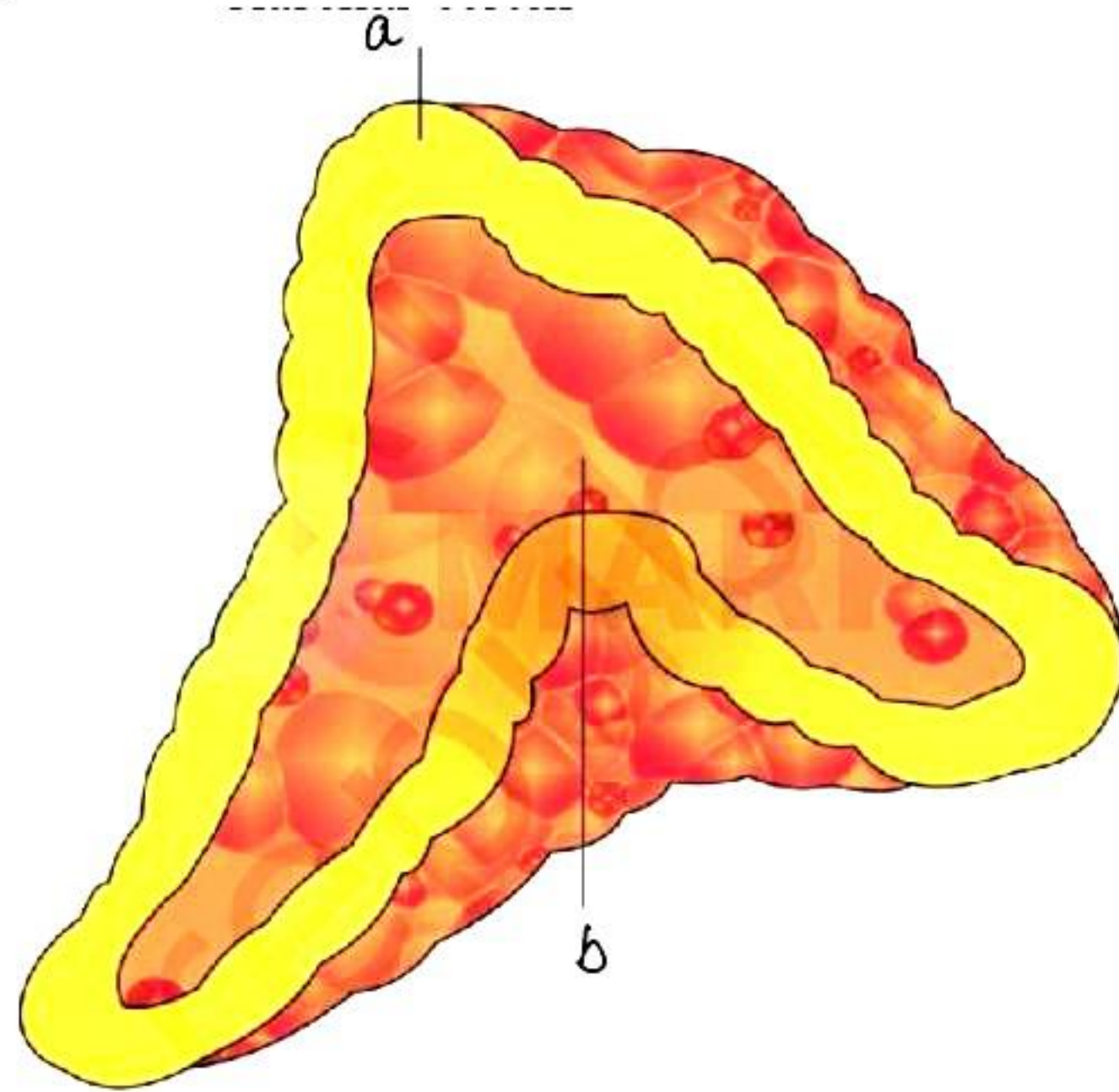


- A. Adrenal Cortex and Adrenal Medulla
- B. Adrenal Medulla and
- C. Pancreas and Adrenal Medulla
- D. Adrenal gland and Adrenal Medulla

Ans. (A)



Q3. Select the correct set of hormones secreted by label a and b.

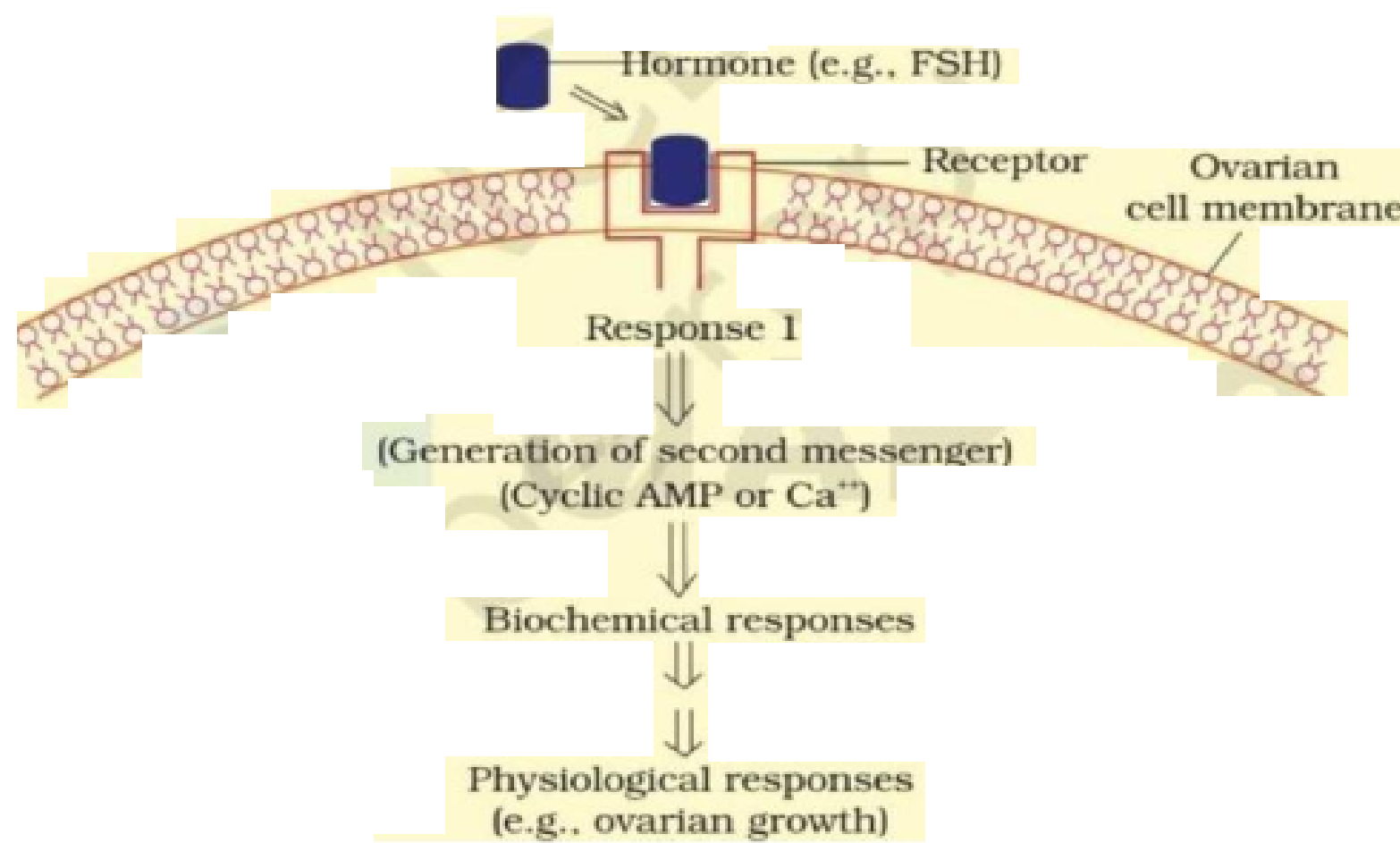


- A. a and b both secrete catecholamines
- B. b secretes catecholamines
- C. a secrete catecholamines
- D. a secretes emergency hormones

Ans. (B)

Set – 5

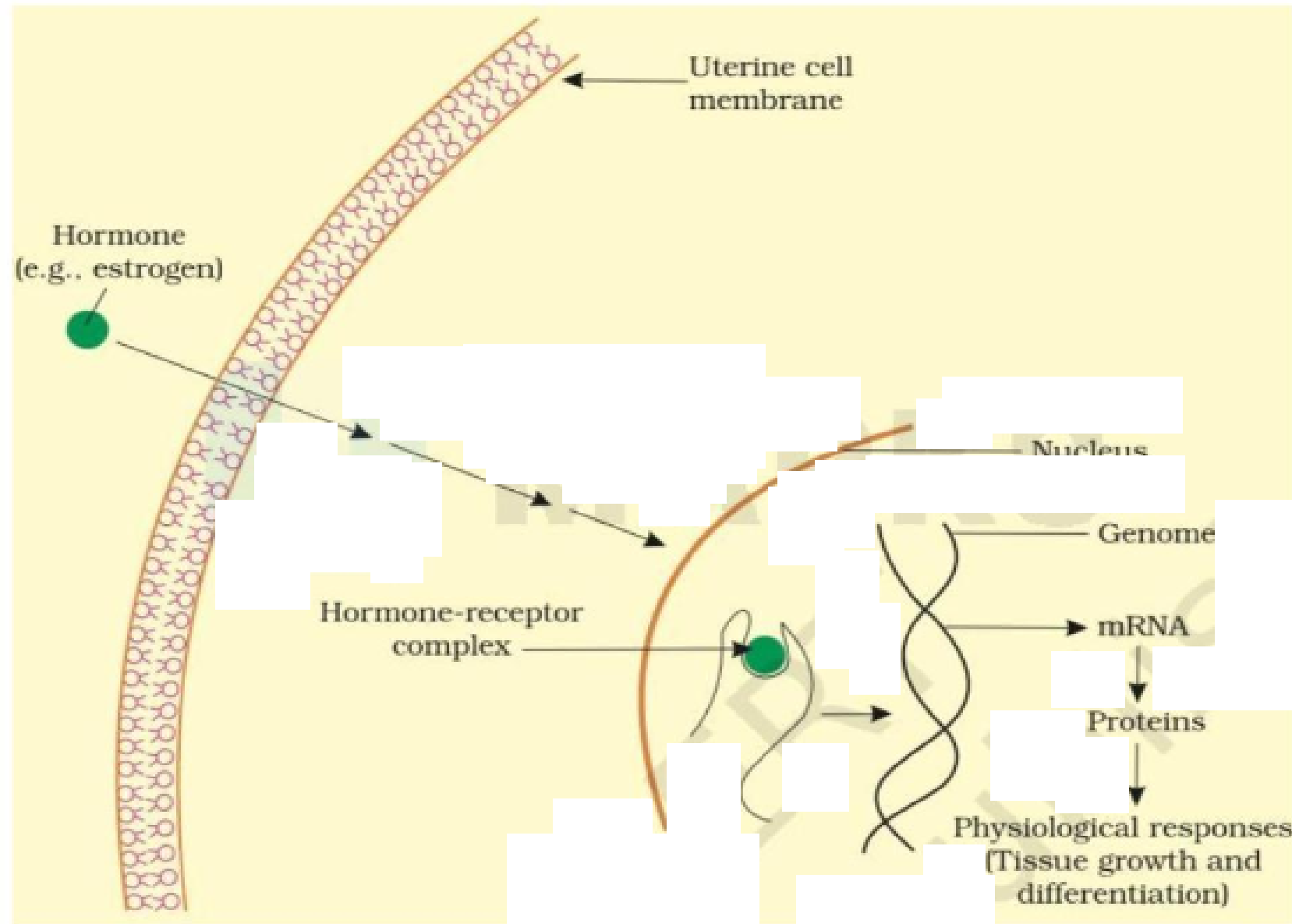
Q1. Which hormone action is shown in the figure?



- A. Protein hormone
- B. Steroid Hormone
- C. Fat hormone
- D. None of the above

Ans. (A)

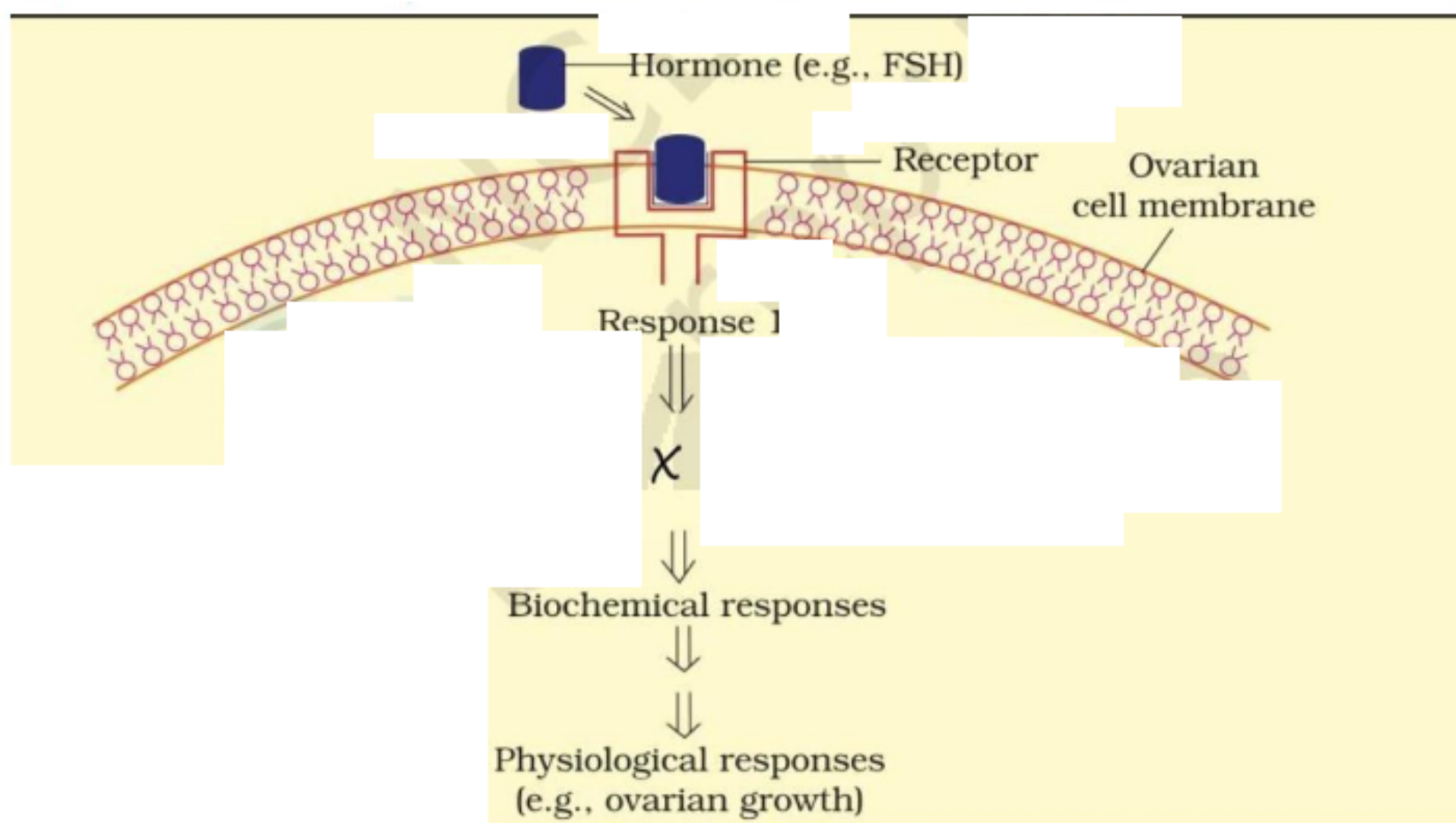
Q2. Which hormone action is shown in the figure?



- A. Protein hormone
- B. Steroid Hormone
- C. Fat hormone
- D. None of the above

Ans. (B)

Q3. What step can be written in X in the following figure?



- A. Hormone receptor complex
- B. and
- C. Generation of AMP or Calcium ions
- D. Both (2) and (3)

Ans. (D)